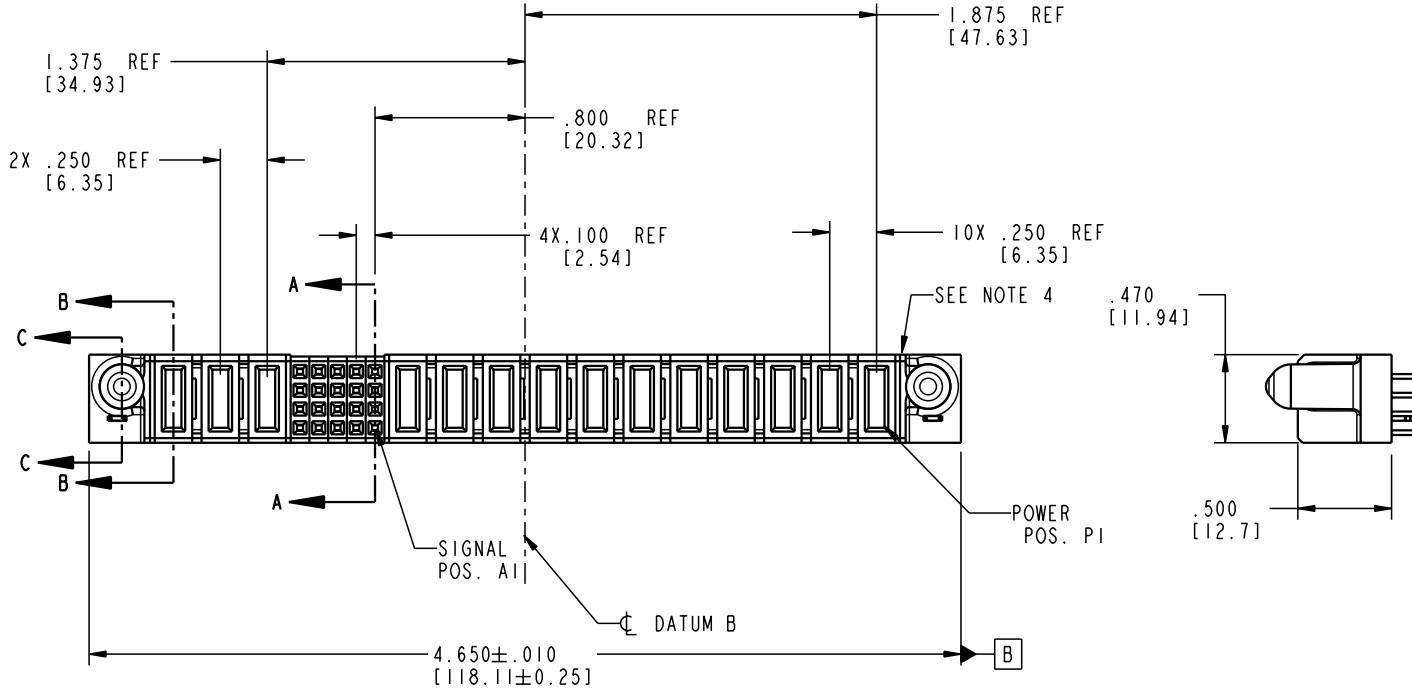


Tous droits strictement reserves. Reproduction ou communication a des tiers interdite sous quelque forme que ce soit sans autorisation écrite du propriétaire. Propriete de c FCI. Droits de reproduction FCI.

All rights strictly reserved. Reproduction or issue to third parties in any form whoever is not permitted without written authority from the proprietor. Property of FCI. Copyright FCI.



PRODUCT NO.	ROWS	POWER			SIGNAL					POWER													
		E2	P14	P13	P12	5	4	3	2	1	P11	P10	P9	P8	P7	P6	P5	P4	P3	P2	P1	E1	
51740-11102003AA	D C B A		PA	PA	PA						PA	PA	PA	PA	PA	PA	PA	PA	PA	PA	PA	PA	



CODE	DIM "M" MATING LENGTH	CONTACT TYPE
E	N/A [N/A]	SIGNAL
PA	.042 [1.07]	POWER
HA	N/A [N/A]	HOLD-DOWN

mot'l code				SEE NOTE 2		tolerances unless otherwise specified		CUSTOMER		 www.fciconnect.com	
ltr	ecn no.	dr	date	linear	.XX±.01/0.X±0.3		COPY		title		
A	V03-0741	MEM	7/3/03		.XXX±.005/0.XX±0.13		projection		IIP + 20S + 3P VERTICAL SOLDER RECEPT		
					.XXX±.0020/0.XXX±0.051				product family		
				angles	0°±2°		INCH/MM		PwrBlade		code
				dr	M. MOSTOLLER	7/3/03	scale		size		213
				engr	M. MOSTOLLER	7/3/03	1:1		dwg no		sheet
				chr	H. BREWBAKER	7/3/03			A 51740-11102003AA		1 of 4
				appd	M. MOSTOLLER	7/3/03					
sheet index	revision sheet	A	A	A	A						
		1	2	3	4						

Pro/E

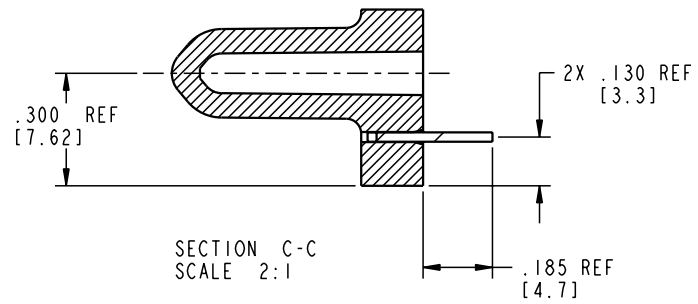
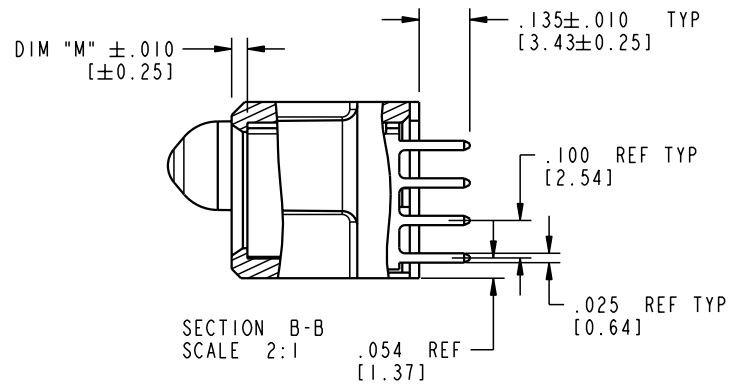
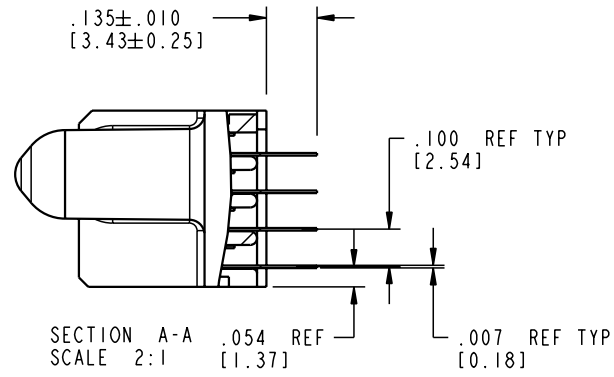
cage code 22526

Tous droits strictement reserves. Reproduction ou communication a des tiers interdite sous quelque forme que ce soit sans autorisation ecrite du proprietaire. Propriete de c FCI. Droits de reproduction FCI.

All rights strictly reserved. Reproduction or issue to third parties in any form whatever is not permitted without written authority from the proprietor. Property of FCI. Copyright FCI.

FCI

PRODUCT NUMBER
51740-11102003AA



mot'l code				SEE NOTE 2		tolerances unless otherwise specified		CUSTOMER		 www.fciconnect.com		
ltr	ecn no.	dr	date	linear	.XX±.01/0.X±0.3		COPY		title			
A					.XXX±.005/0.XX±0.13		projection		IIP + 20S + 3P VERTICALSOLDER RECEPT			
					.XXX±.0020/0.XXX±0.051				product family PwrBlade code			
					angles	0°±2°		INCH/MM		size		
					dr	M. MOSTOLLER	7/3/03	scale		A 51740-11102003AA 213		
				engr	M. MOSTOLLER	7/3/03	1:1		sheet			
				chr	H. BREWBAKER	7/3/03			2 of 4			
				appd	M. MOSTOLLER	7/3/03						
sheet index		revision sheet										

Pro/E

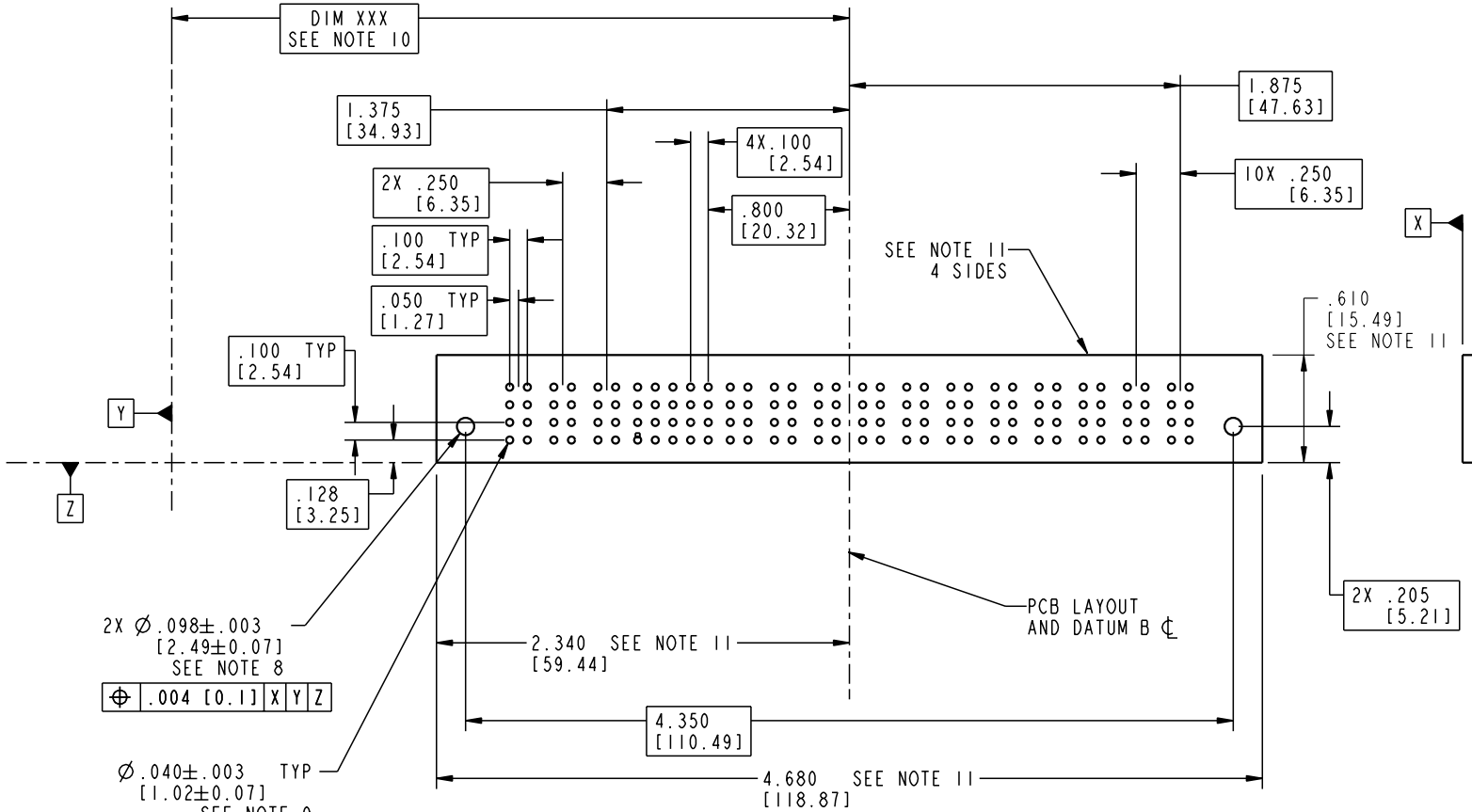
cage code 22526

Tous droits strictement reserves. Reproduction ou communication a des tiers interdite sous quelque forme que ce soit sans autorisation écrite du propriétaire. Propriete de c FCI. Droits de reproduction FCI.

FCI

All rights strictly reserved. Reproduction or issue to third parties in any form whichever is not permitted without written authority from the proprietor. Property of FCI. Copyright FCI.

PRODUCT NUMBER
51740-11102003AA



2X $\varnothing .098 \pm .003$
[2.49 ± 0.07]
SEE NOTE 8
 $\varnothing .004$ [0.1] X Y Z

$\varnothing .040 \pm .003$ TYP
[1.02 ± 0.07]
SEE NOTE 9
 $\varnothing .004$ [0.1] X Y Z

mat'l code				SEE NOTE 2		tolerances unless otherwise specified		CUSTOMER		 www.fciconnect.com	
ltr	ecn no.	dr	date	linear	.XX±.01/0.X±0.3	projection	COPY		title		
A					.XXX±.005/0.XX±0.13		A		IIP + 20S + 3P		
				angles	.XXX±.0020/0.XXX±0.051		INCH/MM		VERTICALSOLDER RECEPT		
				dr	0° ± 2°		scale		product family		code
				engr	M. MOSTOLLER 7/3/03	1:1		PwrBlade		213	
				chr	H. BREWBAKER 7/3/03			size		3 of 4	
				appd	M. MOSTOLLER 7/3/03			A		51740-11102003AA	
sheet index	revision sheet										

cage code 22526

Pro/E

Tous droits strictement reserves. Reproduction ou communication a des tiers interdite sous quelque forme que ce soit sans autorisation écrite du propriétaire. Propriete de c FCI. Droits de reproduction FCI.

A
FCI

All rights strictly reserved. Reproduction or issue to third parties in any form whatever is not permitted without written authority from the proprietor. Property of FCI. Copyright FCI.

A

B

1 | 2

3 |

4

PRODUCT NUMBER
51740-11102003AA

NOTES:


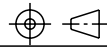

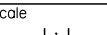
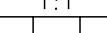
1. DIMENSIONS AND TOLERANCES ARE IN ACCORDANCE WITH ASME Y14.5M, 1994 UNLESS OTHERWISE SPECIFIED.

CONNECTOR NOTES:

- ② HOUSING MATERIAL: UL 94 V-0 GLASS FILLED
HIGH-TEMP THERMOPLASTIC
POWER CONTACT MATERIAL: COPPER ALLOY
SIGNAL PIN MATERIAL: COPPER ALLOY
- 3. PLATING:
SIGNAL PINS: 30u"/0.76um Au OVER 50u"/1.27um Ni
POWER CONTACTS: 50u"/1.27um Ni UNDER ALL
WITH 30u"/0.76um Au ON CONTACT AREA
AND SnPb ON PCB INTERFACE
- ④ MANUFACTURER'S NAME, P/N, AND DATE CODE TO APPEAR ON THIS SURFACE.
- 5. PRODUCT SPECIFICATION GS-12-149.
APPLICATION SPECIFICATION BUS-20-067.
- 6. PACKAGED IN TRAYS.
PCB NOTES:
7. ALL HOLE DIAMETERS ARE FINISHED HOLE SIZE.
- ⑧ MOUNTING HOLES, WHERE APPLICABLE, ARE UNPLATED.
- ⑨ $\varnothing .0453 \pm .0010$ [1.151 \pm 0.025] DRILLED HOLES PLATED WITH .0003 [0.008] MIN SnPb OVER .001 [0.03] TO .003 [0.08] Cu PLATING TO ACHIEVE $\varnothing .040 \pm .003$ [1.02 \pm .07] HOLE.
- ⑩ "DIM XXX" TO BE DETERMINED BY THE CUSTOMER.
- ⑪ CONNECTOR KEEP-OUT ZONE.

A

B

mot'l code		SEE NOTE 2		tolerances unless otherwise specified		CUSTOMER		 www.fciconnect.com	
ltr	ecn no.	dr	date	linear	.XX±.01/0.X±0.3	COPY			
A				linear	.XXX±.005/0.XX±0.13	projection		 title IIP + 20S + 3P VERTICALSOLDER RECEPT	
				angles	.XXX±.0020/0.XXX±0.051	 product family PwrBlade code 213			
				dr	0° ± 2°	 scale 1:1		size	sheet
				engr	M. MOSTOLLER 7/3/03	 A 51740-11102003AA 4 of 4		dwg no	4 of 4
				chr	H. BREWBAKER 7/3/03				
				appd	M. MOSTOLLER 7/3/03				
sheet index	revision sheet								

1 | 2

Pro/E

3 |

cage code **22526**

4